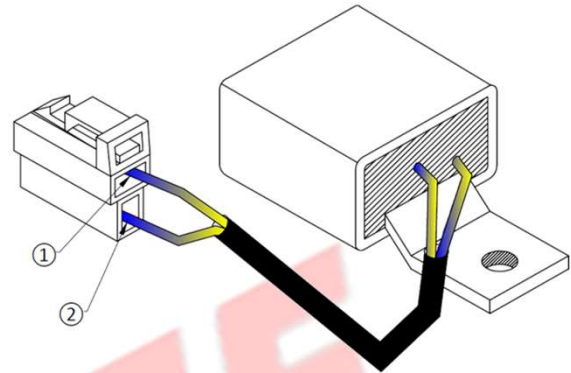


PART No.	SAP-0816	SPECIFICATIONS
PRODUCT	Regulator	

Final Product	Connection Details
---------------	--------------------



BOX COLOUR - BLACK
 EPOXY COLOUR - BLACK
 VTB COLOUR - BLACK
 HEAT SINK COLOUR - METALLIC GREY



CONNECTION DETAILS:-

- ① VIOLET - A.C. OUTPUT
- ② BLUE - A.C. INPUT

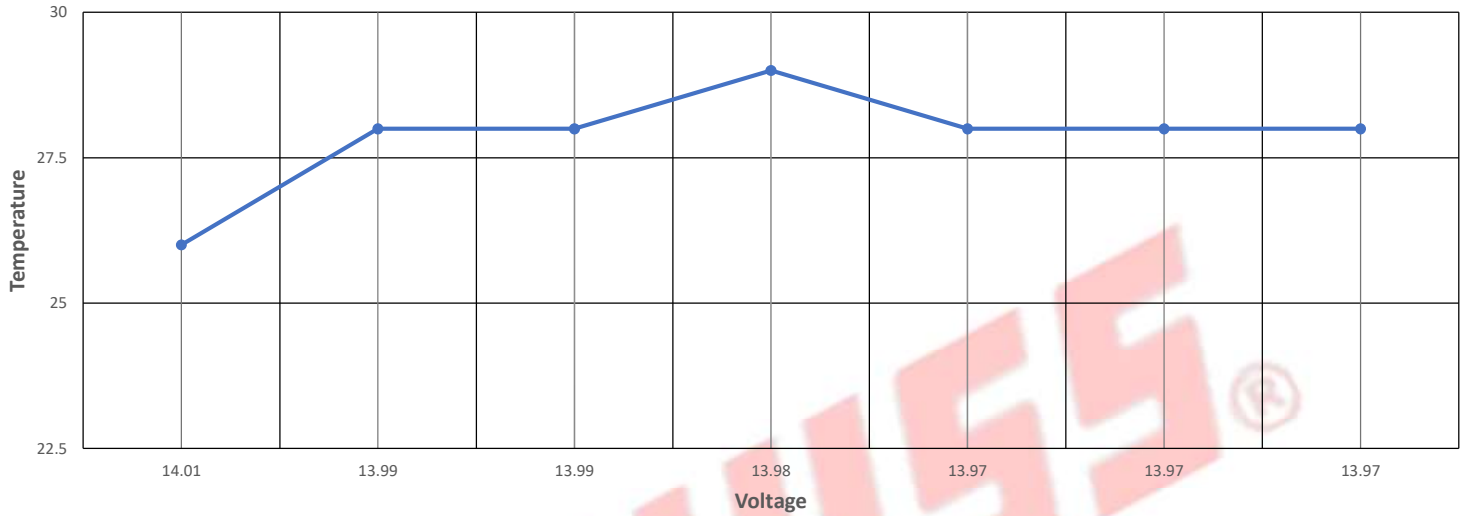
ELECTRICAL SPECIFICATIONS

1	AC Input Voltage	> 294Vpp @9000 RPM
2	AC Input Frequency	< 1KHz (418Hz) @9000 RPM
3	AC Output Current at regulator (With 12V/35W load)	2.7 ±0.3 Amps. @2200 RPM
4	AC Output Voltage at regulator (With 12V/35W load)	13.94 VAC @2200 RPM
5	Temperature co-efficient of DC Output Voltage	±1.6mV/°C @2200 RPM (fixed of time interval)
6	SCR Forward Voltage Drop	Max. 1.5V
7	Terminal B & E Leakage Current @ Vb=13V	Max. 100uA
8	Insulation Resistance	100M Ohm
9	Internal Device Allowed Temperature	110°C

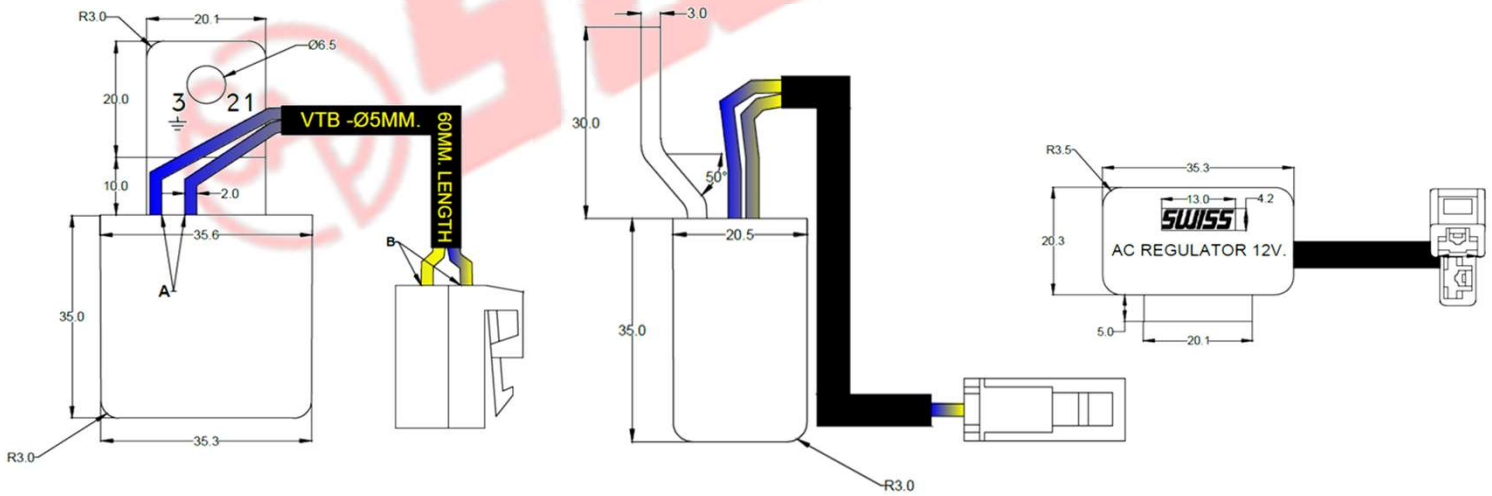
PART No.	SAP-0816	SPECIFICATIONS
PRODUCT	Regulator	

PERFORMANCE GRAPHS

Temperature Co-efficient Curve



MECHANICAL DRAWING



MECHANICAL SPECIFICATION

ENCLOSURE	ABS Case filled with epoxy resin
DIMENSION (mm)	L: 35.0, W: 20.5, H: 20.3
WEIGHT	95 gms
OPERATING TEMPERATURE	-40 °C ~ +80 °C